

# INTRODUCTION CATALOG

Spring, 2026



Sales season in Jan-Mar.



# COLOR CHART OF SPRING 2026

#	#01 ( White)	#02	#03	#04	#05
Swatch					
Color #	#06	#07	#08	#09	#10
Swatch					
Color #	#11	#12	#13	#14	#15
Swatch					
Color #	#16	#17	#18	#19	#20 (Black)
Swatch					

MIKOSEN  
CARA

SAMPLE25-511  
DESCRIPTION: SHIRT  
FABRIC: LINEN/SH  
SIZE: 60x48cm



HIKOSSEN  
CARA

SAMPLE24-512

DESCRIPTION: SHOULDER BAG

Fabric: CANVAS/SH/NYLON

SIZE: 27X40X17CM





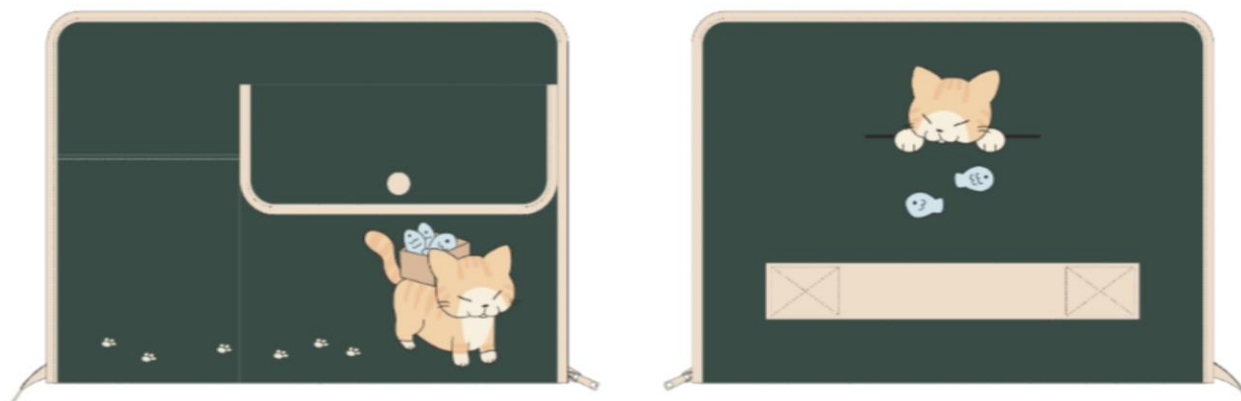


SAMPLE24-513

DESCRIPTION: BAG FOR MACBOOK 15INCH

FABRIC: CANVAS/SH/NYLON (w/Foam)

SIZE: 26x37x2cm



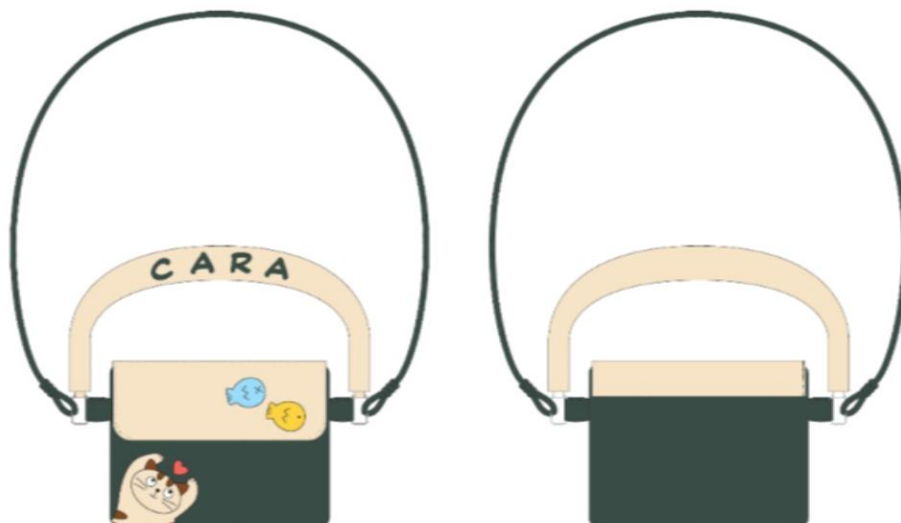


SAMPLE24-514

DESCRIPTION: BAG W Fiber

FABRIC: CANVAS/SH/NYLON

SIZE: 15x20x8cm



MIKOSEN  
CARA

SAMPLE24-515

Description: TOP

Fabric: SJ-170/T.RIB/SH

Size: 67x50CM



HIKOSSEN  
CARA

SAMPLE24-516

Description: PANTS

Fabric: SJ-170/SH

Size: 100x50x34CM





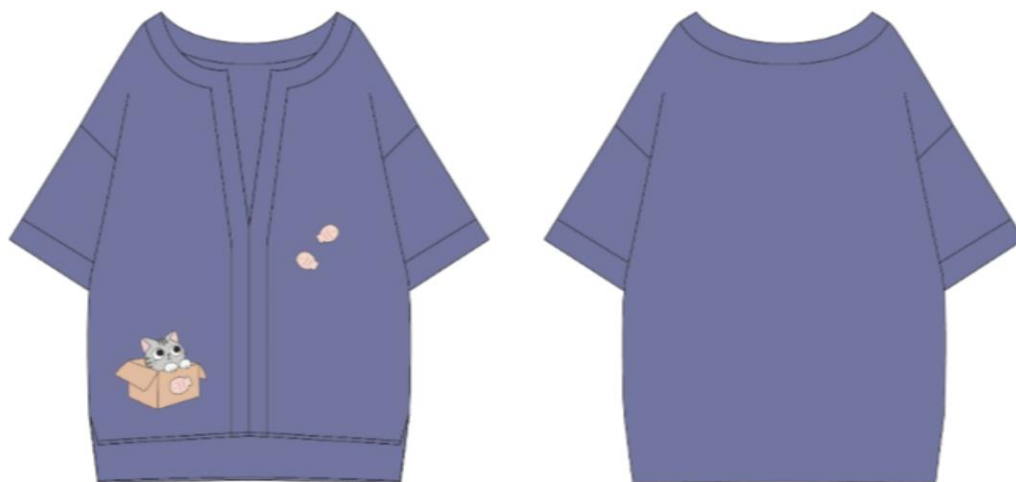
HIKOSSEN  
CARA

SAMPLE24-517  
DESCRIPTION: TOP  
FABRIC: SJ-170/SH/T.RIB  
SIZE: 65x52cm



MIKOSEN  
CARA

SAMPLE24-518  
DESCRIPTION: TOP  
FABRIC: SJ-170/SH  
SIZE: 65x52cm



MIKOSEN  
CARA

SAMPLE24-519  
DESCRIPTION: SHIRT  
FABRIC: DENIM/SH  
SIZE: 65x52cm

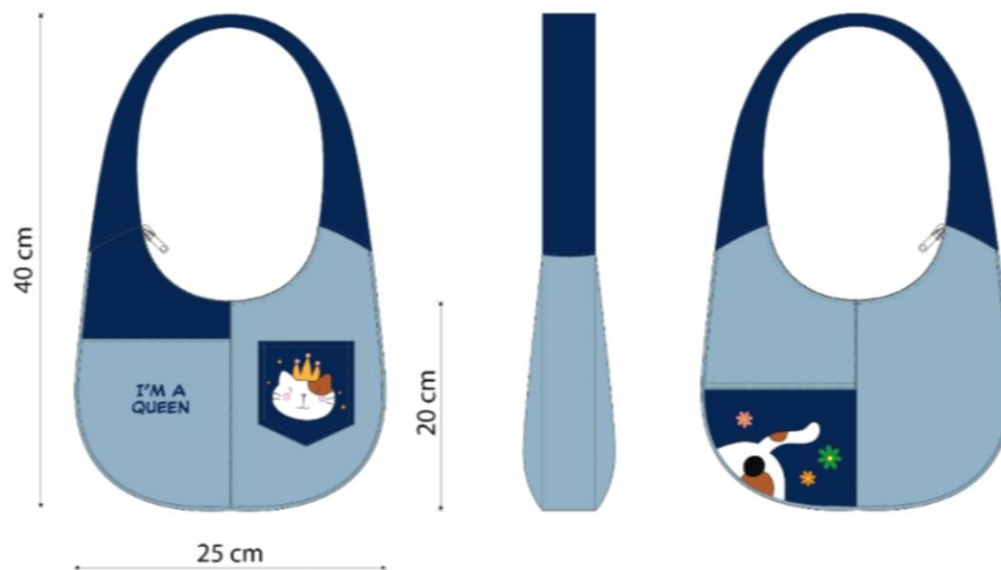


SAMPLE24-520

DESCRIPTION: HAND BAG

FABRIC: CANVAS/SH/NYLON

SIZE: 40x25x10cm



SAMPLE24-521  
DESCRIPTION: BAG  
FABRIC: SHEETING  
SIZE: 30x25x 5cm





SAMPLE24-522  
DESCRIPTION: TABLE CLOTH  
FABRIC: SHEETING  
SIZE: 80X100CM



SAMPLE25-523  
DESCRIPTION: SHIRT  
FABRIC: SHEETING  
SIZE: 50x48cm



SAMPLE25-524

DESCRIPTION: ACCESSORIES

Fabric: PILE

SIZE: 8x8x8cm



SAMPLE25-525

DESCRIPTION: SHOULDER BAG

FABRIC: CANVAS/SH/CHECK STRIP/NYLON

SIZE: 53x30x10cm

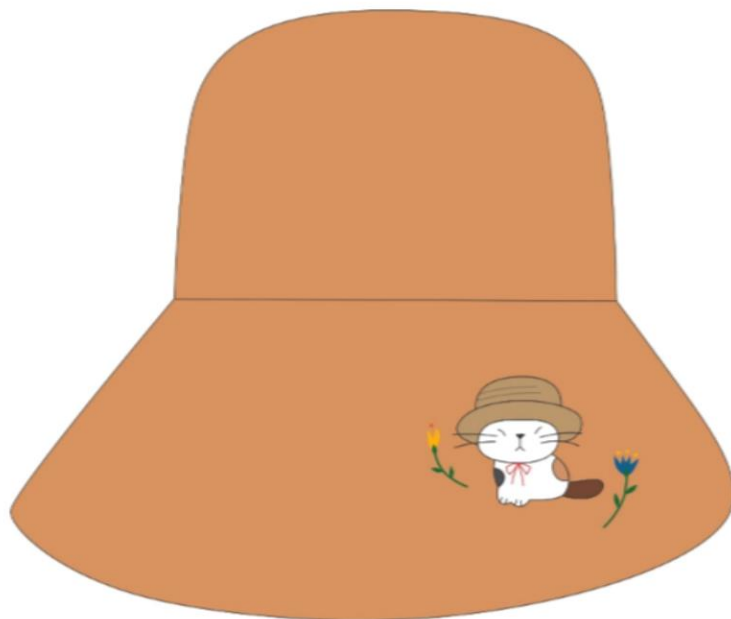


SAMPLE25-526

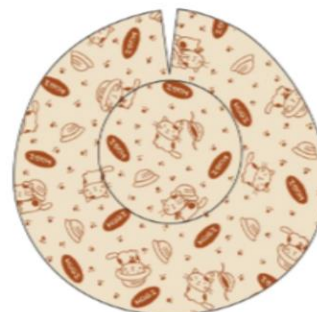
Description: HAT

Fabric: T.CANVAS/SH

Size: Ø 59cm



Inside





HIKOSEN  
CARA

SAMPLE25-527

Description: T-SHIRT

Fabric: SJ-140/SH

Size: M: 62x52cm





SAMPLE25-528

Description: PANTS

Fabric: SW-260/SJ-170/SH/T.RIB

Size: M: 94x51x34cm





SAMPLE25-529

Description: POUCH

Fabric: T.CANVAS/SH

Size: 10x16x10cm



HIKOSEN  
CARA

SAMPLE25-530

Description: APRON

Fabric: SHEETING

Size: M: 96x52cm



HIKOSSEN  
CARA

SAMPLE25-531

Description: PAJAMA

Fabric: T.SHEETING/SH

Size: M: B:65x50/ P:97.5x51x29cm





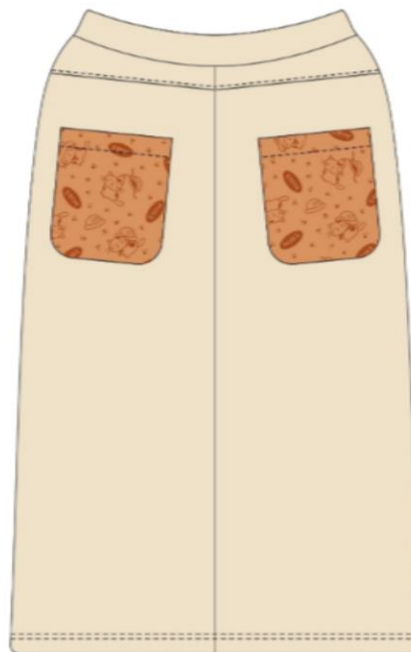


SAMPLE25-532

Description: SKIRT

Fabric: SW-280/SJ-170/SH/RIB

Size: M: 75x47x34cm



HIKOSEN  
CARA

SAMPLE25-533

Description: PAJAMA

Fabric: SJ-170/SH

Size: M: B:65x50/ P:88x53x38cm



SAMPLE25-534

Description: BAG

Fabric: CANVAS/T.CANVAS/SH

Size: 42x26x24cm





SAMPLE25-535

Description: LAPTOP CASE

Fabric: T.CANVAS/SH/NYLON (w/Foam)

Size: 20x26x2cm



HIKOSEN  
CARA

SAMPLE25-536  
Description: JACKET  
Fabric: SHEETING  
Size: M: 64x52cm







SAMPLE25-537  
Description: SOCK  
Fabric:  
Size: 29x8cm



HIKOSEN  
CARA

SAMPLE25-538

Description: VEST

Fabric: Acrylic 70%, Wool 30%

Size: W-52 x L-62 cm



SAMPLE25-539

Description: NECK LACE

Fabric: PILE/SH/YARN

Size: L: 70cm



SAMPLE25-540

Description: POUCH

Fabric: T.CANVAS/SH

Size: 4.5x24x5cm

