

INTRODUCTION CATALOG

Autumn, 2026





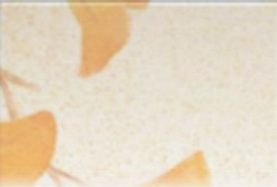



AUGUST 2026



Sales season in Jul-Sep.

COLOR CHART OF AUTUMN 2026

Color #	#01 (White)	#02	#03	#04	#05
Swatch					
Color #	#06	#07	#08	#09	#10
Swatch					
Color #	#11	#12	#13	#14	#15
Swatch					
Color #	#16	#17	#18	#19	#20 (Black)
Swatch					

Swatch					
--------	---	---	--	---	---

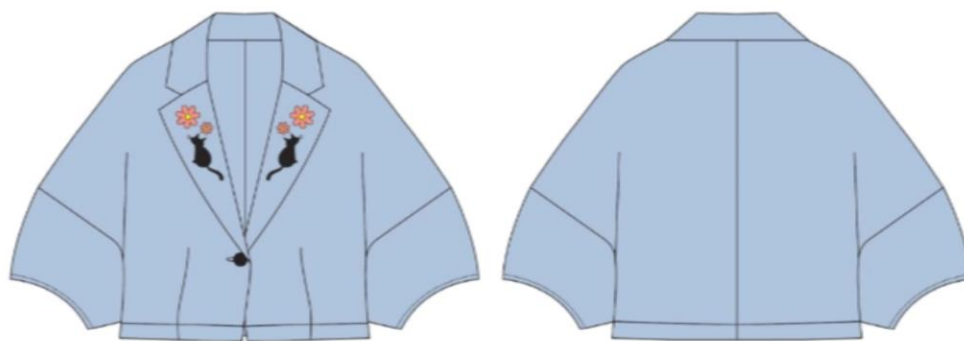
HIKOSEN
CARA

SAMPLE26-177
DESCRIPTION: TOP
FABRIC: SJ-170/SH
SIZE: 65x52cm



HIKOSEN
CARA

SAMPLE26-178
DESCRIPTION: TOP
FABRIC: DRILL/SH
SIZE: 55x48cm



HIKOSEN
CARA

SAMPLE26-179
DESCRIPTION: TOP
FABRIC: SJ-170/SH
SIZE: 65x48cm



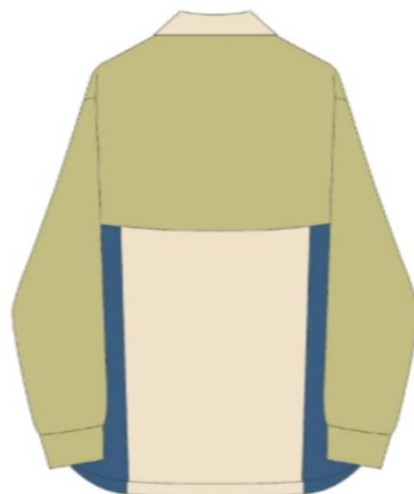
HIKOSEN
CARA

SAMPLE26-180
DESCRIPTION: TOP
FABRIC: DRILL/SH
SIZE: 55x48cm



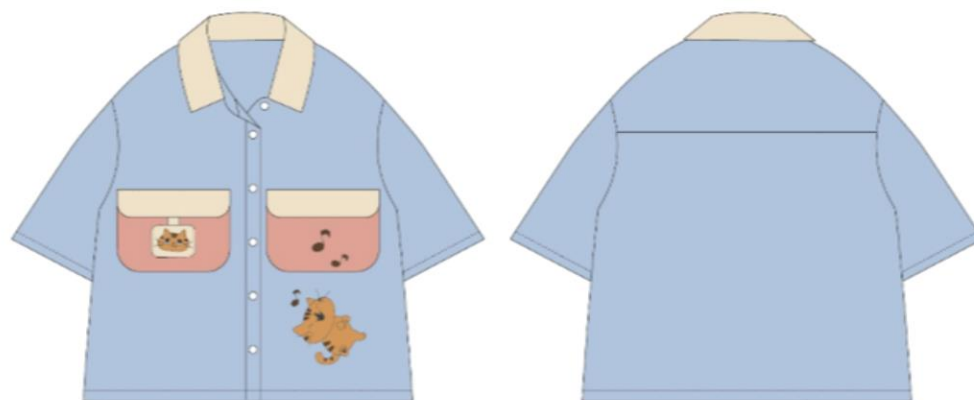
HIKOSEN
CARA

SAMPLE26-181
DESCRIPTION: SHIRT
FABRIC: SJ-170/SHEETING/SH
SIZE: 65x50cm



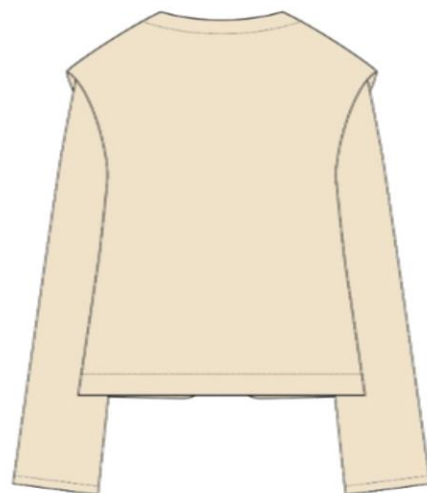
HIKOSAN
CARA

SAMPLE26-182
DESCRIPTION: SHIRT
FABRIC: SHEETING/SH
SIZE: 60x50cm



HIKOSEN
CARA

SAMPLE26-183
DESCRIPTION: TOP
FABRIC: DRILL/SH
SIZE: 57x47cm



HIKOSAN
CARA

SAMPLE26-184
DESCRIPTION: TOP
FABRIC: DRILL/SH
SIZE: 55x45cm



HIKOSEN
CARA

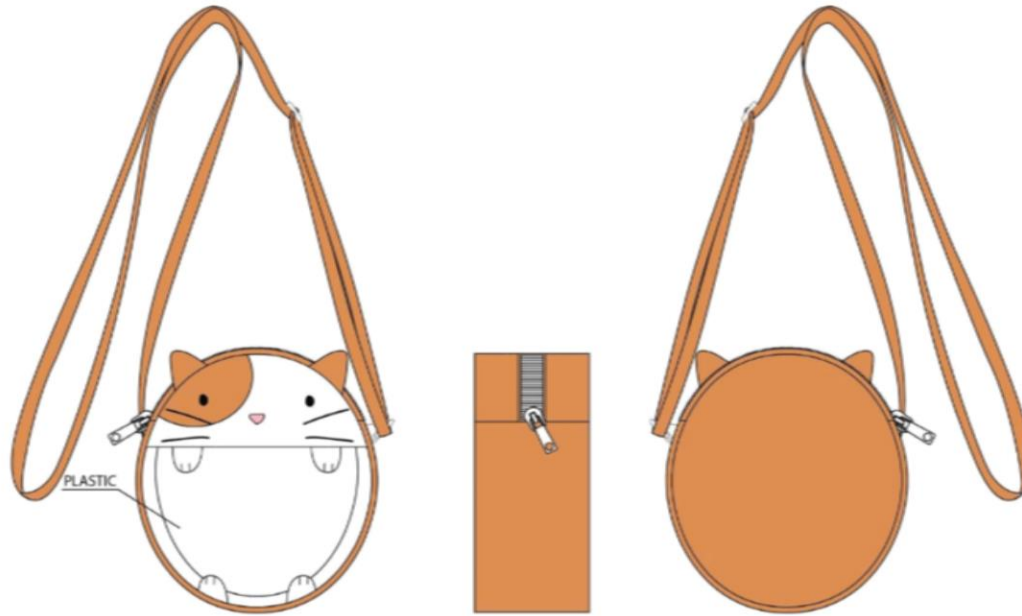
SAMPLE26-185
DESCRIPTION: BAG
FABRIC: CANAS/SH
SIZE: 22x30x13cm

5x8x3cm



HIKOSEN
CARA

SAMPLE26-186
DESCRIPTION: BAG
FABRIC: CANAS/FOAM/SH
SIZE: 15x14x10cm



HIKOSEN
CARA

SAMPLE26-187
DESCRIPTION: BAG
FABRIC: CANAS/SH
SIZE: 12x20x8cm



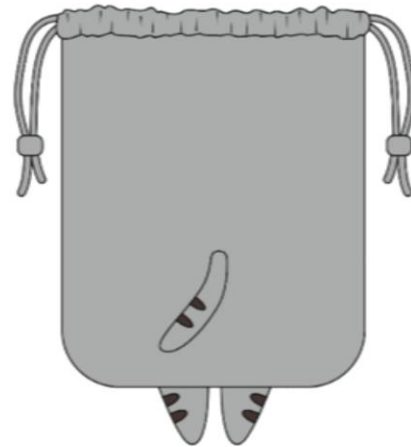
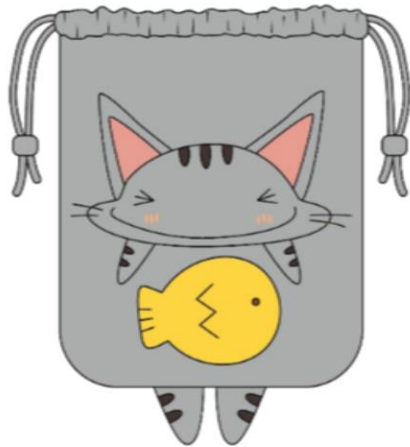
HIKOSEN
CARA

SAMPLE26-188
DESCRIPTION: BAG
FABRIC: CANAS/SH
SIZE: 30x30x10cm



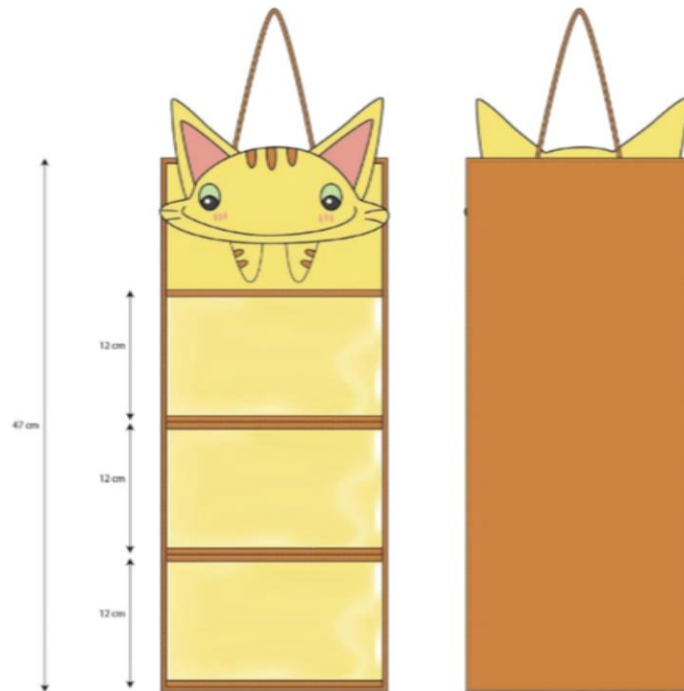
HIKOSEN
CARA

SAMPLE26-189
DESCRIPTION: POUCH
FABRIC: SHEETING
SIZE: 16x13cm



HIKOSEN
CARA

SAMPLE26-190
DESCRIPTION: WALL POCKET
FABRIC: SHEETING
SIZE: 47x20cm



HIKOSEN
CARA

SAMPLE26-191
DESCRIPTION: DECORATION
FABRIC: PILE/SH
SIZE: H: 5.5cm



HIKOSEN
CARA

SAMPLE26-192
DESCRIPTION: DECORATION
FABRIC: PILE/SH
SIZE: H:5.5 cm



HIKOSEN
CARA

SAMPLE26-193
DESCRIPTION: DECORATION
FABRIC: PILE
SIZE: H:5.5 cm



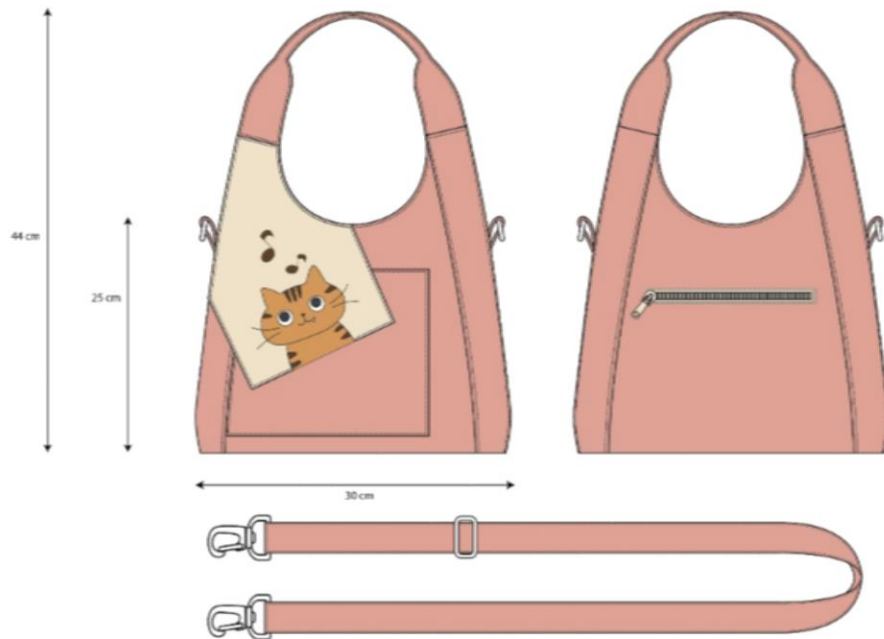
HIKOSEN
CARA

SAMPLE26-194
DESCRIPTION: DECORATION
FABRIC: PILE/SH
SIZE: H:5.5 cm



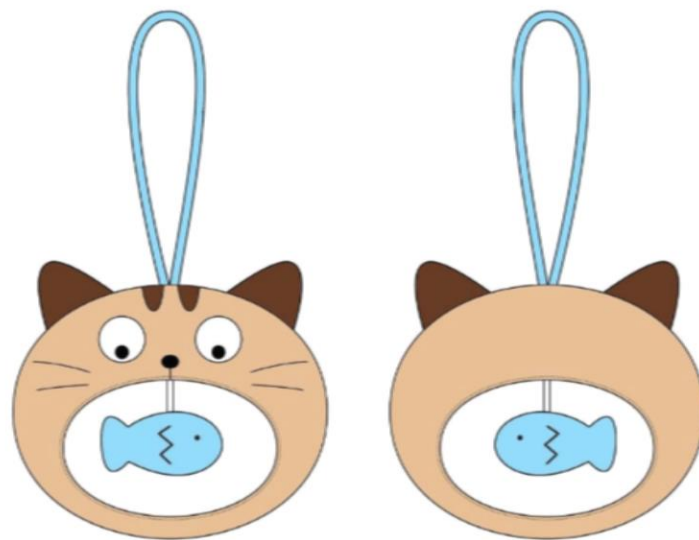
HIKOSAN
CARA

SAMPLE26-195
DESCRIPTION: BAG
FABRIC: CANVAS/FOAM/NYLON/SH
SIZE: 44x33x14cm



HIKOSEN
CARA

SAMPLE26-196
DESCRIPTION: DECORATION
FABRIC: PILE/SH
SIZE: H:5.5 cm



HIKOSEN
CARA

SAMPLE26-197
Description: POUCH
Fabric: T.CANVAS/SH
Size: 12x8.5x2cm



MIKOSEN
CARA

SAMPLE26-198

Description: POUCH

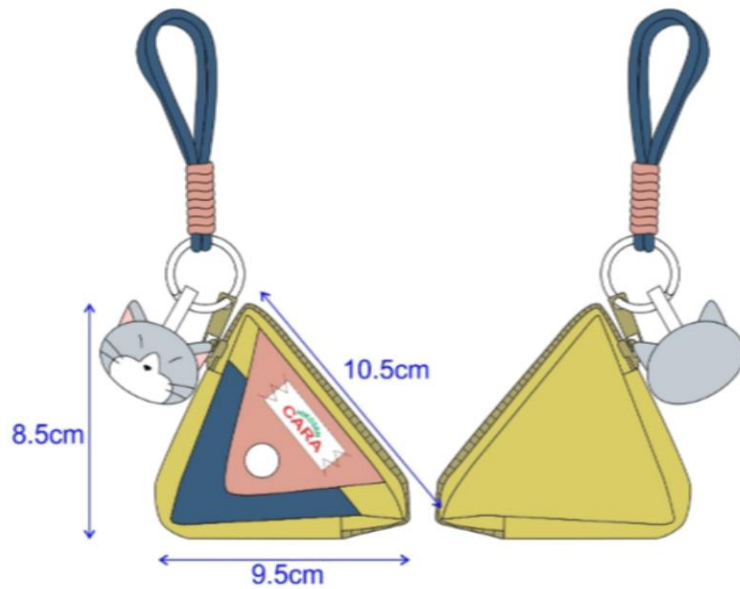
Fabric: CANVAS/SH/NYLON

Size: 14x23x12cm



HIKOSEN
CARA

SAMPLE26-199
Description: POUCH
Fabric: DRILL/SH
Size: 8.5x9.5x2cm



HIKOSEN
CARA

SAMPLE26-200
Description: BAG
Fabric: CANVAS/SH
Size: 40x35x5cm



HIKOSEN
CARA

SAMPLE26-201
Description: BAG
Fabric: DRILL/SH/VINYL
Size: 40x26x12cm





SAMPLE26-202

Description: DECORATION

Fabric: SHEETING (w/Foam)

Size: 10x4cm

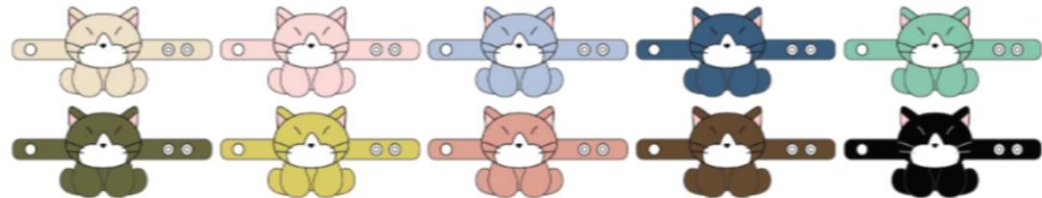
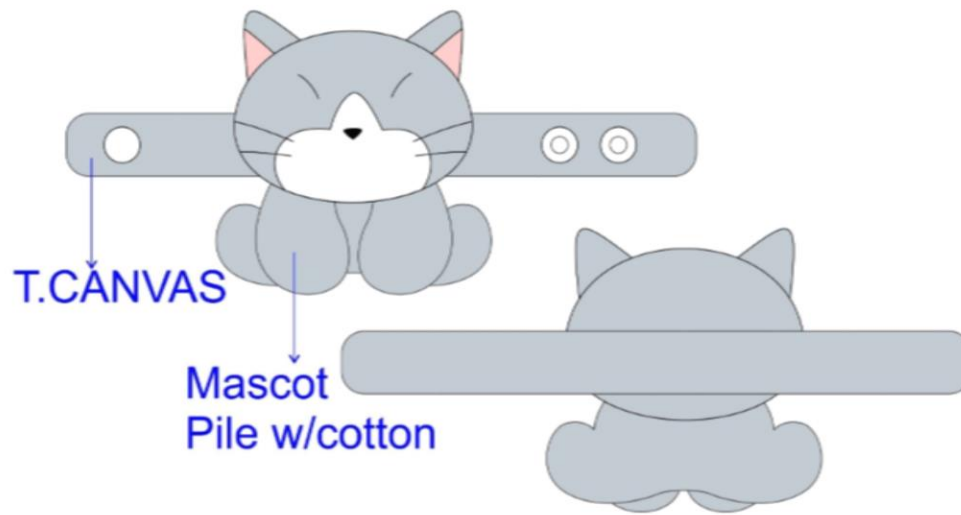


SAMPLE26-203

Description: DECORATION

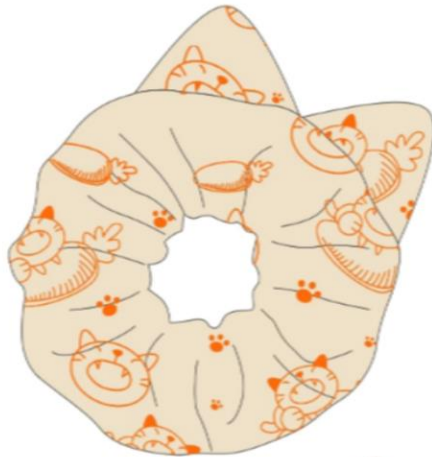
Fabric: T.CANVAS/PILE/SH

Size: 10x1.5cm



HIKOSEN
CARA

SAMPLE26-204
Description: HAIR BAND
Fabric: SJ-170
Size: Ø 18 (5,7)cm



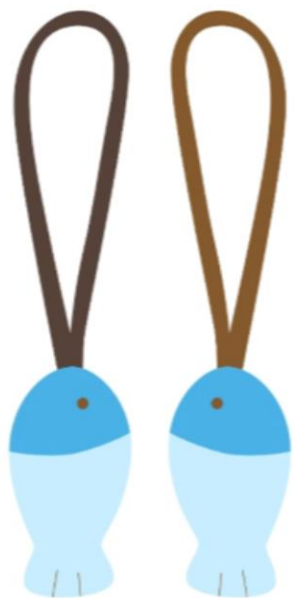
HIKOSEN
CARA

SAMPLE26-205

Description: DECORATION

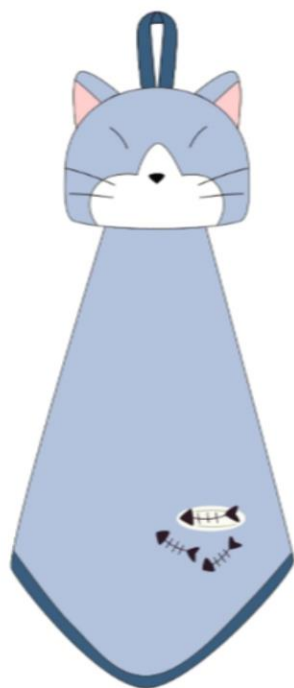
Fabric: SHEETING/MESH

Size: H: 4.5cm



HIKOSEN
CARA

SAMPLE26-206
Description: HAND TOWEL
Fabric: TOWEL/SH
Size: L: 40cm



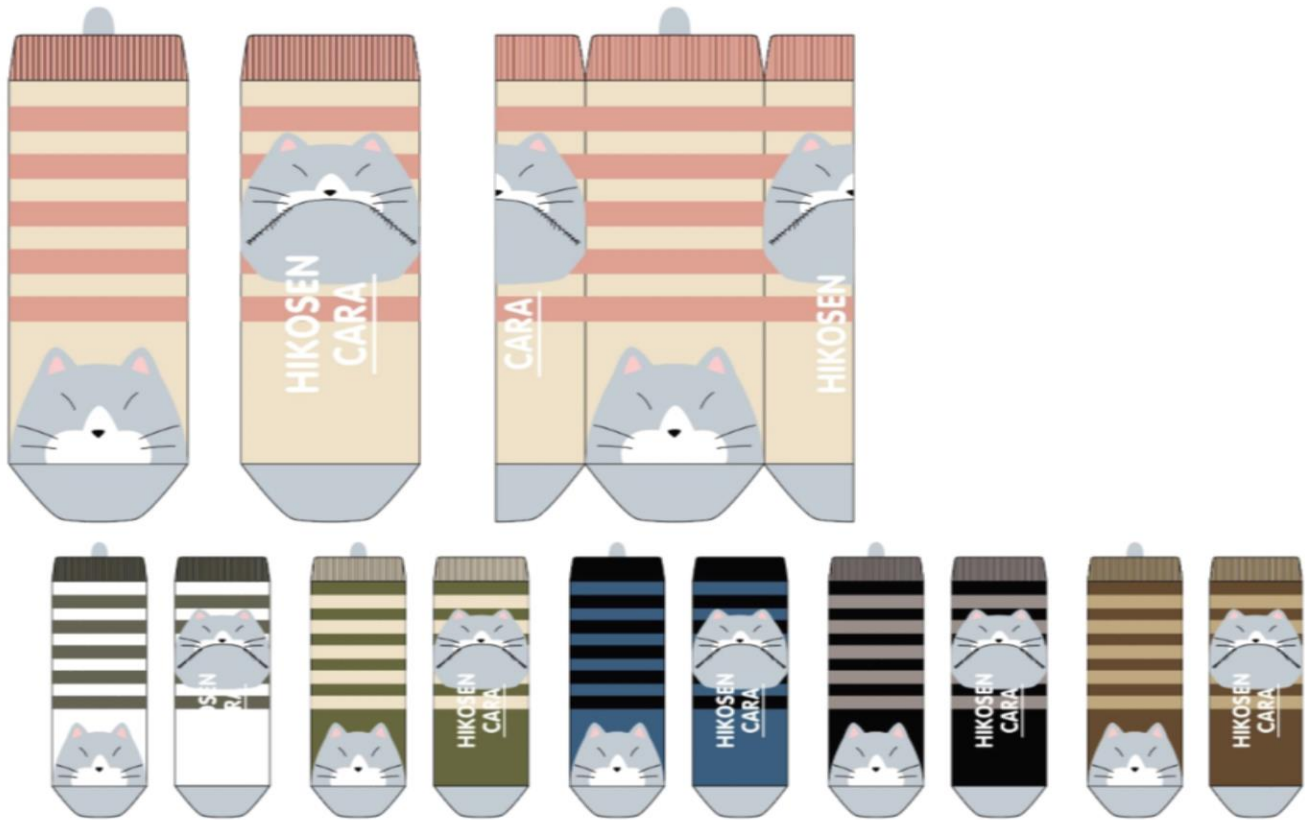


SAMPLE26-207

Description: SOCKS

Fabric: 73% Cotton, 16% Spandex, 9% Nvlon. 2% Rubber

Size: 21x8cm



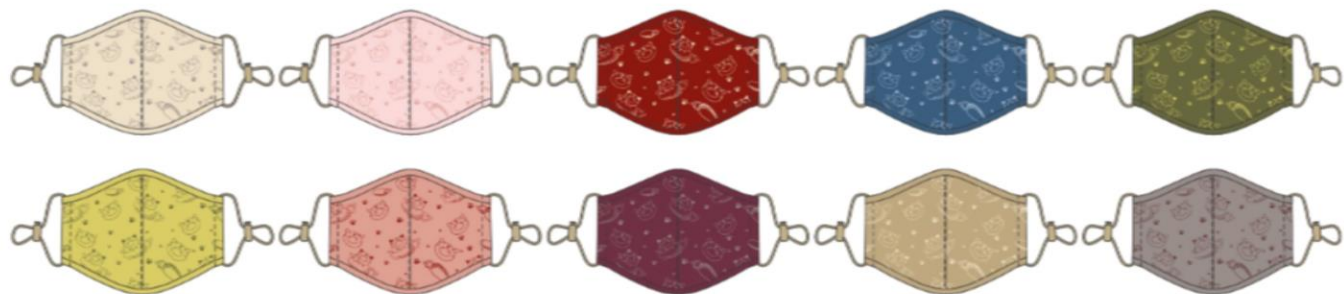
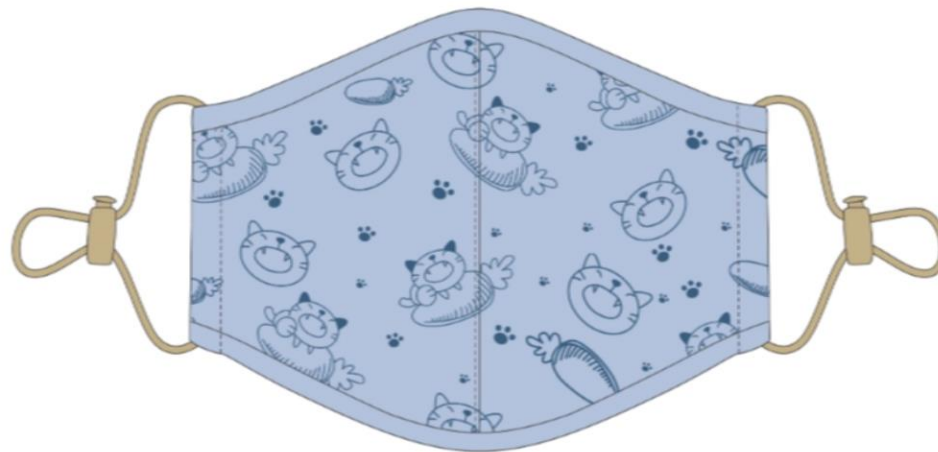


SAMPLE26-208

Description: Mask w/Fiber

Fabric: SJ-170/T.SH

Size: M: 14x24cm



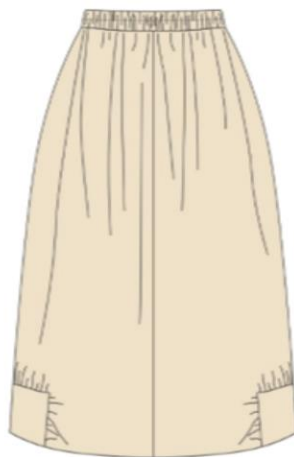


SAMPLE26-209
Description: POUCH
Fabric: SHEETING
Size: 24x20cm



HIKOSEN
CARA

SAMPLE26-210
Description: SKIRT
Fabric: DRILL/SH
Size: M: 89x34cm



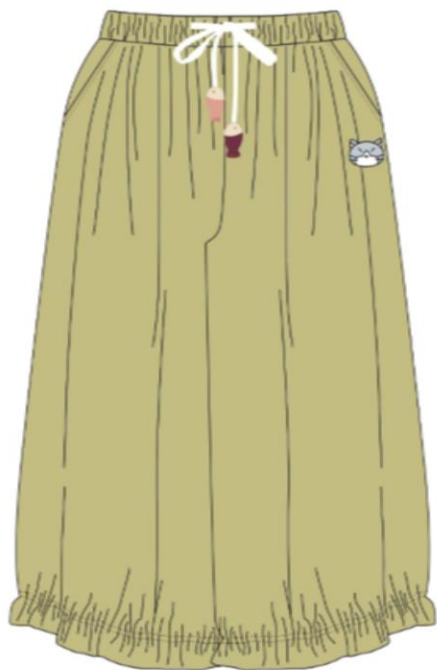
HIKOSEN
CARA

SAMPLE26-211
Description: T-SHIRT
Fabric: SJ-170/SH
Size: M: 68x54cm



HIKOSEN
CARA

SAMPLE26-212
Description: PANTS
Fabric: SHEETING
Size: M: 88x56x34cm



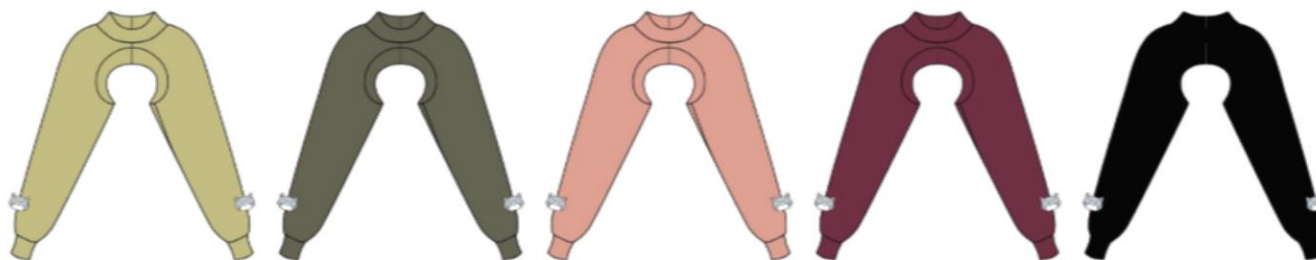
HIKOSEN
CARA

SAMPLE26-213

Description: TOPS

Fabric: SW-200/SH/RIB

Size: L: 18cm



HIKOSEN
CARA

SAMPLE26-214

Description: PULL OVER

Fabric: Acrylic 70% Wool 30%

Size: L:62xW:54cm



HIKOSEN
CARA

SAMPLE26-215

Description: VEST

Fabric: Acrylic 70% Wool 30%

Size: L:69xW:51cm



HIKOSEN
CARA

SAMPLE26-216

Description: PULL OVER

Fabric: Acrylic 70% Wool 30%

Size: L:62xW:54cm

